

## SURFORMA® WarmIN Terrace Table

Decorative Compact table with low voltage warmers integrated

### DESCRIPTION

The Surforma® WarmIN Terrace Table is an advanced heated furniture solution engineered for modern and sustainable interior and exterior applications. This product incorporates WarmIN Compact, a decorative high-pressure laminate with integrated Halia® low-voltage radiant warmers. The system delivers efficient, localized heat with extremely low energy consumption.

#### Material & Energy Efficiency

The WarmIN system prioritizes both sustainability and efficiency. Each table contains Halia® heating elements that are ultra-thin and lightweight, weighing only 3 to 4 grams per unit. These heater elements are plastic-free and can be produced from recycled metals commonly found in circulation, such as aluminum, copper, or nickel.

In terms of energy performance, the integrated Halia® heating system offers energy savings ranging from 20% to 95%, depending on the application and the comparison with traditional heating solutions. A single heater pixel within the table consumes approximately 50 watts per hour.

The table has a standard dimension of 80 x 80 cm.

For detailed technical specifications of WarmIN Compact please refer to the Technical Data Sheets for WarmIN HPL and Compact\_March2025.

### APPLICATIONS

#### Warmth When and Where You Need It

Interior and Exterior Terrace table.

### TECHNICAL DRAWINGS

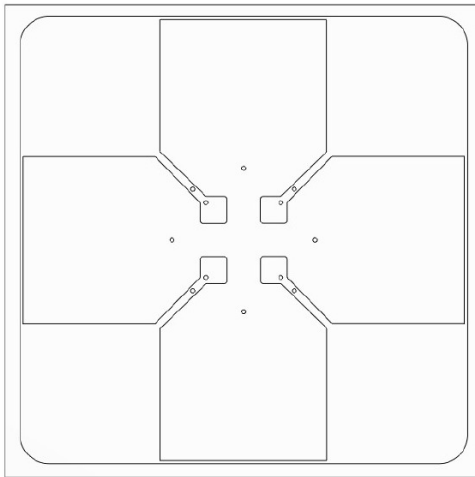


Image 1

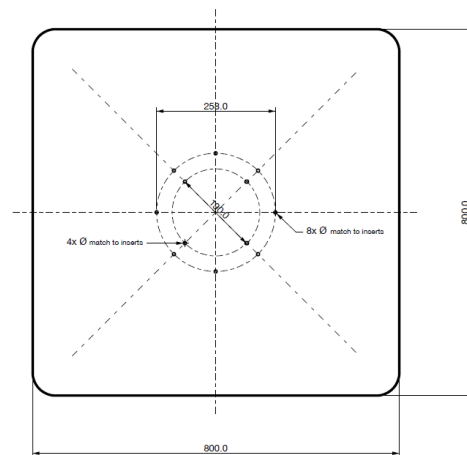


Image 2

## SURFORMA® WarmIN Terrace Table

Decorative Compact table with low voltage warmers integrated

### TABLE ASSEMBLY COMPONENTS

The WarmIN Terrace Table is supplied with the following components necessary for assembly, as illustrated in Image 1 (excluding the table top and power supply):

1. Tabletop featuring a pre-installed printed circuit board (PCB) and protective PCB enclosure
2. Extension cord, 3 meters in length
3. Power supply unit, 48V AC/DC
4. Top flange for the table leg
5. Table leg pipe
6. Cross-shaped bottom plate for table leg support
7. Mounting hardware, including bolts and washers:
  - Eight (8) M4 x 12 mm bolts for securing the top flange to the tabletop
  - Two (2) M8 x 30 mm bolts for attaching the top flange to the table leg pipe
  - Two (2) M8 x 60 mm bolts for fastening the cross-type bottom plate to the table leg pipe



**Image 3.** Components listed above excluding the table top.

### REQUIRED TOOLS FOR FINAL ASSEMBLY

For the final assembly of the table, a 3 mm and a 6 mm hex key are required.

**Note:** The use of power tools is NOT RECOMMENDED, as they may damage the threads on the legs and tabletop. Refer to Image 4 for the required hex keys.



**Image 4.** A 3 mm and a 6 mm hex key are required for the final assembly.

## SURFORMA® Warmin Terrace Table

Decorative Compact table with low voltage warmers integrated

### ASSEMBLY INSTRUCTIONS

1. Begin by assembling the table leg.
2. Insert the Molex connector end of the extension cable through the leg components in the following sequence:
  - a. Pass the cable through the cross-shaped bottom plate (see Image 6).
  - b. Guide the cable through the leg pipe (see Figure 16).
  - c. Continue the cable through the top flange of the leg (see Image 7).
3. Secure the cross-shaped bottom plate to the leg pipe using the two (2) M8 x 60 mm mounting bolts (see Image 8).
4. Attach the top flange to the leg pipe with the two (2) M8 x 30 mm mounting bolts (see Image 9).
5. Tighten all M8 bolts manually. The use of power tools is discouraged to prevent damage to the bolt threads. The fully assembled leg is depicted in Image 10.
6. Position the tabletop upside down on a clean, flat surface to prepare for further assembly.
7. Connect the Molex extension cable to the PCB on the tabletop. NOTE: Ensure that the connector firmly clicks into place to guarantee a secure connection (see Image 11).
8. Proceed to install the leg assembly onto the tabletop.
9. Align the leg assembly over the PCB casing so that the power button is easily accessible (see Image 12 & 13).
10. Fasten the leg to the tabletop using the eight (8) M4 x 12 mm mounting bolts (see Image 14).
11. Manually tighten all M4 bolts. Avoid using power tools to protect the integrity of the threads.
12. Connect the extension cable to the 48V AC/DC power adapter.
13. The assembly is now complete. Test the functionality of the table by plugging in the power cord. The green LED indicator will illuminate within a few seconds, confirming operational status.



**Image 5.** The Molex connector of the extension cable is routed through the cross-type bottom plate of the leg



**Image 6.** The Molex connector of the extension cable is routed through the leg pipe

## SURFORMA® Warmin Terrace Table

Decorative Compact table with low voltage warmers integrated



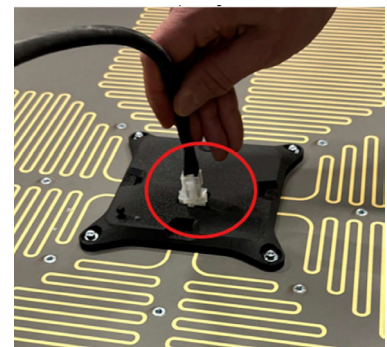
**Image 7.** The extension cable's Molex connector is routed through the leg top flange.



**Image 8.** The cross-type bottom plate is securely attached to the leg pipe.



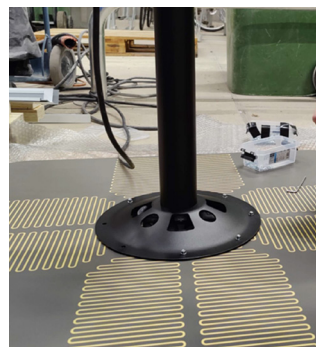
**Image 9.** The top flange is securely attached to the leg pipe



**Image 10, 11.** The fully assembled leg unit with integrated extension cable. The power cord is connected to the PCB.



**Image 12,13.** The PCB power button and LED indicator are visible through the left circular opening



**Image 14.** Table assembled to the tabletop